



Blistering or not

RM Shaft seal Inspection

If a shaft seal fails there are two options:

- **Exchange the seal and hope the next will not fail.**
- **Exchange the seal and rules out the well know causes of seal failure.**

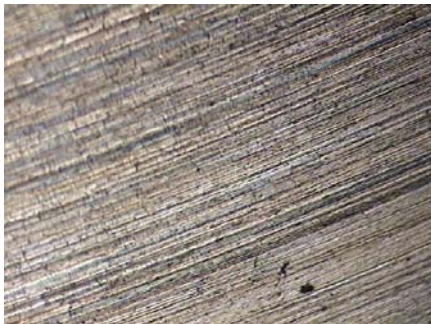
We offer you to get the information, which helps to provide seal failure.

We work with our partner Eagle-Burgmann to provide you the information. For each inspected seal you receive a refund on a new one.

Our procedure:

1. Your order a new seal- we charge you for this one- if you send the old seal to us- we inspect this seal – you receive a full inspection report with recommendations with no charge.
2. You receive the seal by our own partner, we will inspect your seal and charge you 75,00 Euro pro inspection.

Why to use our inspection- Simple because it can provide you information to avoid blistering damage.



Blistering, Dry-running or corona effect:
 Cause: If the lubrication oil contains a higher proportion refrigerant (liquid phase). The refrigerant will be forced to go into gas phase because of the heat developed by the Shaft seal. (Heat of friction between stationary- and rotating part. The pressure of the refrigerant will lightly rise above the lubrication pressure and force out the lubrication film. The dry-running takes place.

We can help you to adjust the compressor unit on this way the blistering and overload can be reduced.

RM-Support BV

Aquamarijnstraat 143, 7554 NP Hengelo, The Netherlands
Phone: +31 (0)74 256 9777 Fax: +31(0)74 2566 490, Cell phone: +31 (0)6 427 20 672

E-mail: info@rm-support.nl, www.rm-support.nl, www.rm-support.com

Commercial Reg. Enschede No. 08133380, VAT No. NL 8141 42 953 B01, Rabobank A/C No.31.72.83.820



The **coil** on the back

Return From To Be inspected Seal

Unit details	
Compressor Type Working konditions Used refrigerant	
Type E-motor Fixsed drive speed or FR driven RPM E-motor	
By FR conntrolled temperatures check at RPM.	
Temperature After compression (discharge heat) Super feed (ECO) yes/no Cooling : Water , refrigerant-or Liquid injection. If possible Eaten Amperage E-motor	
Used oil typ	
History of Unit	
Time of prevous break Compressor seal Time of prevous breakoil pump seal Was the bearing of E-motor changed Was the alginment checked Oil Consumption	

Please send the old Seal, with this information sheet.

We will inform you about our recommendations

Company Details	
Company	
Address	
Zip Code	
Country	
Contact Person	
Reference	

RM-Support BV

Aquamarijnstraat 143, 7554 NP Hengelo, The Netherlands
Phone: +31 (0)74 256 9777 Fax: +31(0)74 2566 490, Cell phone: +31 (0)6 427 20 672

E-mail: info@rm-support.nl, www.rm-support.nl, www.rm-support.com

Commercial Reg. Enschede No. 08133380, VAT No. NL 8141 42 953 B01, Rabobank A/C No.31.72.83.820